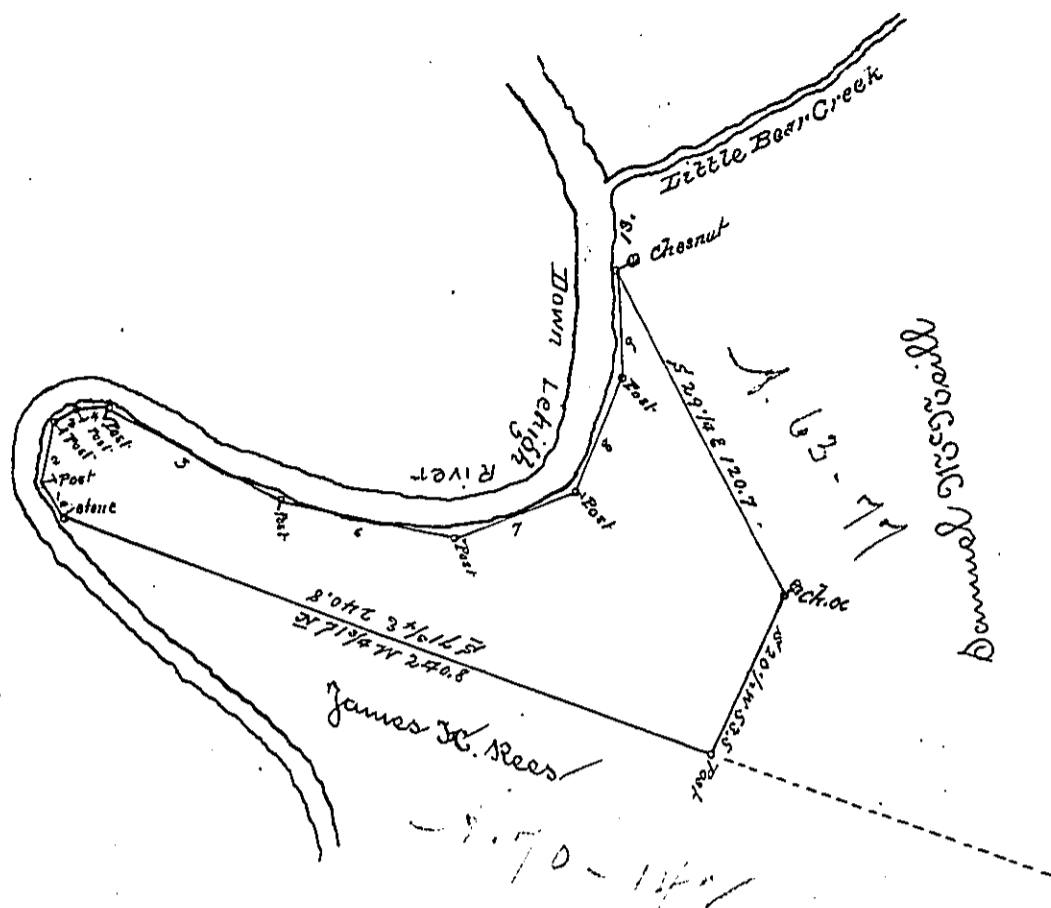


(E.) Mauch Chunk  
CARBON.

✓



- No 1. N 39 W 13
- 2. N 12 1/2 E 22
- 3. N 56 E 9
- 4. East 11
- 5. S 60 1/2 E 67
- 6. S 78 1/2 E 61
- 7. N 68 E 44
- 8. N 22 E 40
- 9. N 4 W 32

By Virtue of a Warrant granted Jonathan Fell by dated the Eighteenth day of June  
 surveyed the 10th day of November AD. 1835  
 AD. 1827 to Courtland J. Fell Adm<sup>r</sup> of the estate of Jonathan Fell, the above described  
 tract of Land situate on the East side of the River Lehigh in Mauch Chunk Town-  
 ship Northampton County containing eighty acres and sixty nine perches and  
 the allowance of six per cent for roads & this land is unimproved

To Jacob Spangler  
 Surveyor General  
 of the State of Pennsylvania

Wm<sup>r</sup> H. Townsend Ad. S.

IN TESTIMONY that the above is a copy of the original remaining on file in the  
 Department of Internal Affairs of Pennsylvania, made con-  
 formably to an Act of Assembly approved the 16th day of  
 February, 1833, I have hereunto set my Hand and caused  
 the Seal of said Department to be affixed at Harrisburg, this  
 third day of March 1896

James Whatta  
 Secretary of Internal Affairs.